

Effluent and Environmental | **Stirrers** ▶▶





## STIRRERS

## ◀◀ HORIZONTAL

## ADVANTAGES

- No greasing or regular maintenance required.
- Wide range of models available varying from 0.8kw to 7.5kw to allow efficient stirring depending on your pond or tank size.
- Range of mounting options.



**Your choice of a pond or tank stirrer is central to the quality of fertiliser which will be applied to your paddocks. The correct size, number and positioning of stirrers puts effluent into suspension, enabling an even spread of nutrients to be pumped and applied to your pasture.**

The Horizontal Stirrer is mounted on a boom or winch bracket enabling easy inspection and maintenance.

A wide range of models and mounting options is available to suit every location, storage system and level of agitation required. Depending on the mounting system, the Horizontal Stirrer can easily be moved up and down to stir the pond/tank and prevent a crust from forming.

## Technical Specifications

Size of the Tank (m3)	0 - 4 % Solids	4 - 8% Solids	8 - 12% Solids
25	0.8kw	1.5kw	2.2kw
47	0.8kw	3kw	5.5kw
70	0.8kw	4kw	7.5kw
95	0.8kw	5.5kw	9kw
110	1.5kw	7.5kw or 2x 3kw	11kw or 2x 9kw
190	2.2kw	7.5kw or 2x 3kw	18kw or 2x 9kw
300	4kw	Contact us	Contact us
400	4kw	Contact us	Contact us
550	5.5kw	Contact us	Contact us
700	2x 4kw	Contact us	Contact us

Correct size, numbers and positioning of the stirrer/s enables all of the solids to be stirred into suspension for pumping.

Advice should be sought to select the correct stirrer/s as this is critical to the stirring success and results.

### Key to optimal performance

Choosing the correct size stirrer/s, where to position them, and how to best mount them is critical to optimising the stirrers performance. For a constant product and to prevent solid build up stirrer should be running when pumping.

### Additional options

- Mounting bracket available for tanks / sumps.
- Shore based mounting system available for ponds.

### ENVIRONMENTAL FEATURES:

- Stirring reduces odours and gasses.
- Improved utilisation and consistency of nutrients.
- Quiet operation.



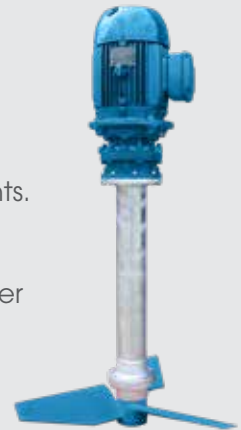


## STIRRERS

## ◀ VERTICAL

## ADVANTAGES

- Low power usage.
- Breaks down solids making it easier for soils to absorb effluent and utilise nutrients.
- No greasing required.
- Reduced servicing requirements due to the oil bath lubrication preventing lower bearings from rusting or seizing.



**Vertical stirrers, with a unique three blade propeller, effectively and efficiently stir sludge in tanks and ponds, breaking up crusting.**

Designed to deliver the highest level of efficiency for the most demanding dairy effluent conditions, the stirrers effortlessly mix heavy waste, even in very large dairy effluent tanks, making it ideal for feed pads and separators.

The stirrer can be used by itself on a pontoon or with a pump. The ideal pontoon system is designed so it can be easily moved to ensure the entire pond is stirred.

## Technical Specifications

VERTICAL STIRRER
Standard 4kW and 7.5kW motors.
Standard shafts 0.6m, 2.5m.
Other sizes available on request.
No greasing required, minimises chances of bearings seizing and high maintenance costs.
Oil bath lubrication to lower bearings (cannot rust or seize).
Tungsten carbide mechanical seals, increasing the life of the stirrer
Heavy duty galvanised column.
Computer designed blade gives leading edge performance.

Due to the extremely efficient stirring action produced by the stirrer, it is recommended either a concrete pad, or a diffuser attached to the pontoons is placed directly underneath it to deflect the thrust of the blade.

### Key to optimal performance

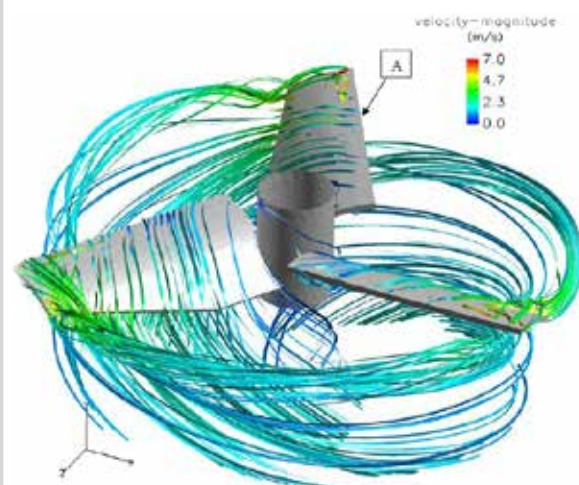
Selecting the correct pontoon where there is very little restriction around it, and setting the blade at the correct level under the surface, will help to optimise the stirrer's performance.

### Additional options

- 3, 4 and 5 drum pontoon options available for both pond and tanks.
- Deflector cone available for pontoons.

### ENVIRONMENTAL FEATURES:

- Efficient blades stir the dairy effluent introducing air to minimize odours and gases.
- Low power usage.
- Breaks down solids making it easier for soils to absorb effluent and utilize nutrients.



## Farm Dairy Effluent - **Design Accredited**

Working with regional councils around the country, we design, manufacture and install dairy effluent systems which meet the requirements of the relevant council, making it easy for farmers to be compliant today and into the future.



The programme goal is to ensure all NZ dairy farmers have effluent systems that can achieve dairy industry and wider communities' expectations for the land application of dairy effluent.

## Farm Dairy Effluent - **WOF Certified Assessor**

The Effluent WOF programme consists of a voluntary, independent inspection of a farmer's effluent infrastructure and practices to ensure the system is compliant 365 days a year.



A 3-4 hour assessment covers the farm's effluent consents and permitted rules, the storage capacity, nutrient loadings, soil risk, irrigator performance, off-pasture infrastructure and general health and safety requirements.

All inspections are completed by people who are fully certified as Warrant of Fitness Assessors. Every assessor has completed the Farm Dairy Effluent System Warrant of Fitness Course and a subsequent field assessment.





BORN IN  
NEW ZEALAND  
DEVELOPED FOR  
THE WORLD



T: +64 7 849 8755 F: +64 7 849 5923

29 Innovation Way | Northgate Business Park, Horotiu | Hamilton, New Zealand  
PO Box 20325, Hamilton 3241 | New Zealand

[waikatomilking.com](http://waikatomilking.com)

